



Builders | Promoters | Engineers | Architects



Bhujanga Rao Road, Near PPC College, Udupi-576101

# ARCHANA CENTRAL

*Living amidst the City*

## *Specifications*

### **KITCHEN**

*Adequate Electrical Points Provision for Electrical Appliances.*

*Granite Platform with Tiles upto 2ft.*

*Stainless Steel Sink.*

*Plumbing and Drainage Connection.*

*Chimney & Hob Electrical Point.*

*Reticulated Gas Connection.*

### **BALCONIES**

*Separate Drain Pipe to Drain Out the Water*

*Elegant Balcony Railing*

*Ceramic/Terracotta Anti Skid Tiles.*

*French Type Aluminium Sliding Door for Balconies.*

### **LIVING/DINING**

*Vitrified based Flooring/Digital Tiles*

*Modular Electrical Switches*

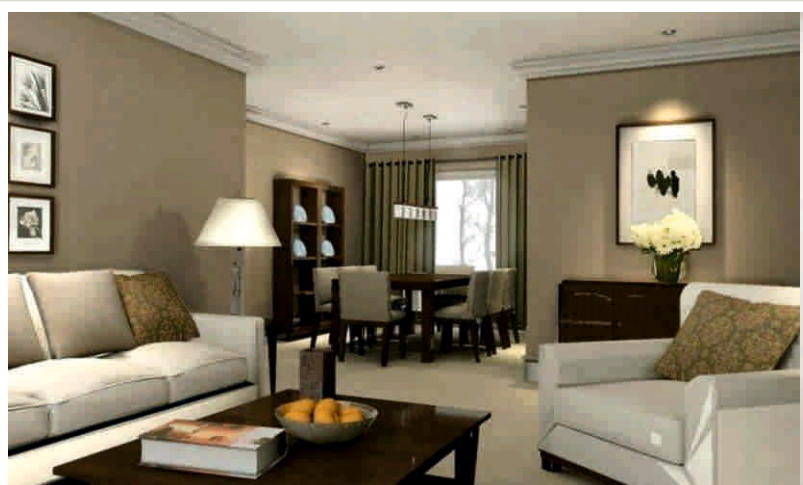
*Wash Basin for Dining*

*Power Supply For Split AC*

*Telephone Point*

*Teak Wood Main Door*

*Emulsion Paint for wall with Putty finish*



## **ELEVATOR**

*1 No. Fully Automatic*

*Capacity : 10 People*

*ARD Attachment*

## **BEDROOMS**

*Power Supply for AC (for all rooms)*

*Two way light control*

*TV Point for Master Bedroom*

*Vitrified Flooring/Digital Tiles*

## **CAR PARK**

*On Ownership Basis*

## **BATHROOM**

*Upto 8 ft. height coverage glazed tiles*

*Geyser point provision*

*Exhaust point provision*

*Jaquar / Equivalent CP & Sanitary fittings*

*Anti skid flooring*

## **WATER SOURCE**

*Well with Underground Sump*

*An Overhead Tank for Storage*



## *Highlights*

- *Open Party Hall Space on Roof Top*
- *Multipurpose GYM*
- *Reticulated Gas System*
- *24Hrs Generator Backup for Lighting*
- *Manpower Security*
- *24Hrs CCTV Surveillance System*
- *Access Controlled Lobby Area*
- *Spacious Visitors Lounge*
- *Intercom Facility*
- *Rain Water Harvesting*
- *STP*



*The pursuit of perfection may seem like a mountain affair, but for us at Archana Projects, it is another day at work. We believe in delivering the best, be it in terms of quality of homes or the amenities we offer with them. Through the last 16 years it is this belief that has driven us to create many masterpieces, one of which is Archana Central, which is Centrally and Conveniently located in the middle of the city.*

*Archana Projects owes its origin to Dr. Aravind Nayak Ammunje & Amit Aravind who envisioned a success story waiting to take shape in the real estate field in the year 2004. Since its formation in 2004, Archana Projects and ISO 9001:2015 company swiftly to become one of Udupi's leading real estate developers*

*contributing to the skyline across the residential, commercial, retail, leisure and hospitality sectors.*

*Archana Projects stands and strives for setting up new benchmarks in quality, customer centric approach, robust engineering, in house research, upcoming business ethics, timeless values and transparency in all the sectors of business conduct, which have all contributed to making it a brand trusted for excellence.*

*Archana Projects is an organisation of its own kind where quality meets excellence, technology meets beauty and passion meets perfection.*







#### FIRST FLOOR AREA STATEMENTS

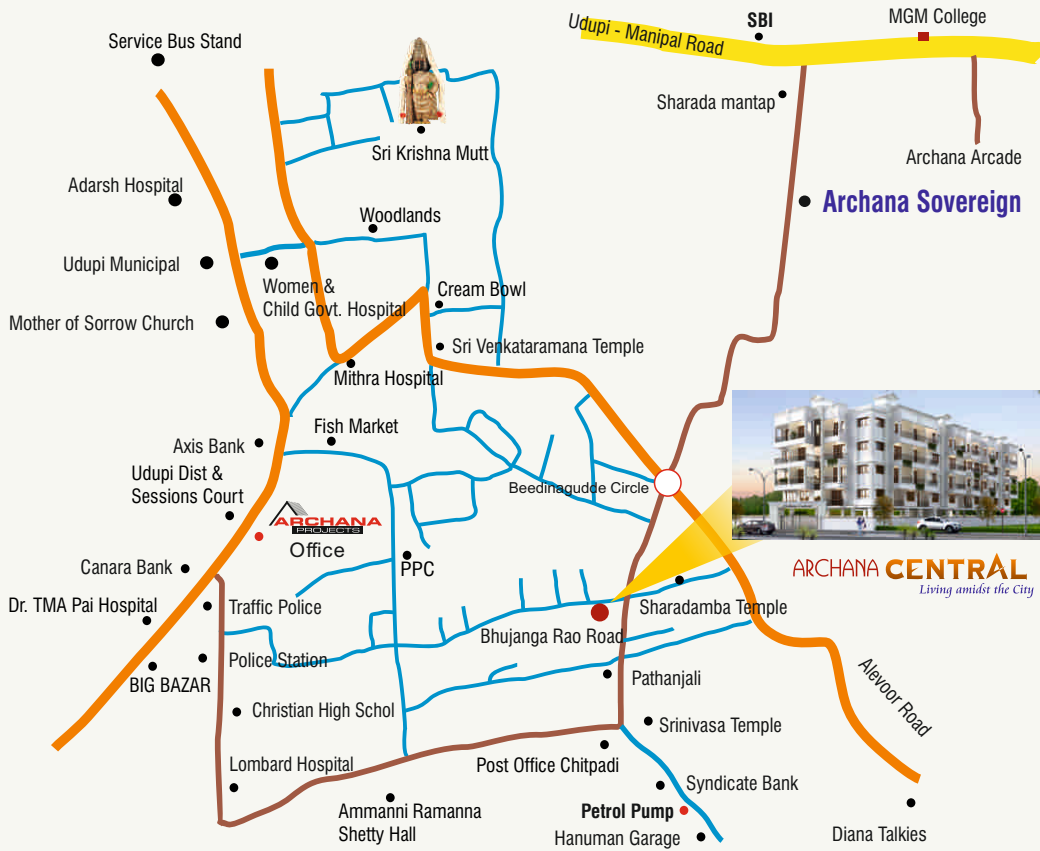
FLAT NO	TYPE	SBA IN SQ. FT	CARPET SQ. FT	BALCONY SQ. FT
FLAT 1	2BHK	975	686.77	60.00
FLAT 2	2BHK	1035	765.31	33.00
FLAT 3	3BHK	1460	1045.86	80.00
FLAT 4	3BHK	1535	1089.70	86.00
FLAT 5	2BHK	1145	838.11	42.00
FLAT 6	2BHK	1175	863.77	42.00
FLAT 7	2BHK	1010	728.42	40.00
FLAT 8	2BHK	1105	807.83	40.00



#### SECOND, THIRD, FORTH FLOOR AREA STATEMENTS

FLAT NO	TYPE	SBA IN SQ. FT	CARPET SQ. FT	BALCONY SQ. FT
FLAT 1	2BHK	1125	731.73	143.50
FLAT 2	2BHK	1195	772.77	157.50
FLAT 3	3BHK	1565	1107.42	105.00
FLAT 4	3BHK	1870	1203.11	250.00
FLAT 5	2BHK	1245	863.00	106.50
FLAT 6	2BHK	1315	900.77	125.00
FLAT 7	2BHK	1155	774.01	115.00
FLAT 8	2BHK	1260	855.00	122.50

## SITE LOCATION



**Site Office :** Bhujanga Rao Road, Near PPC College, Udupi-576101

**Project RERA No:** PRM/KA/RERA/1273/318/PR/200817/003552

### Nearby walkable Landmarks

- Poorna Prajna College - 650m
- Vidyodaya School - 1 km
- SLV Temple - 700 m
- Sri Krishna Temple - 1 km
- Mother of Sorrows Church - 1.1 km
- TMA Pai Hospital - 1 km
- Adarsha Hospital - 1.5 km
- Diana Circle - 1 km
- Fish Market - 800m
- Big Bazar- 1 km

### Transport

- Railway Station - 3 km
- Service Bus Stand - 2 km
- Mangaluru Airport - 58 km

## ONGOING PROJECTS



RERA No.: PRM/KA/RERA/1273/318/PR/190219/002404

Sharada Mantap - Beednagudde Main Road, Kunjibettu, Udupi - 576 102.

**ARCHANA SOVEREIGN**  
LIVE GOLD CLASS Commercial Spaces & Residential Apartments

## COMPLETED PROJECTS - SOLD OUT



**ARCHANA CLASSIC**  
RESIDENTIAL APARTMENTS  
Ambalpadu, Udupi



**Little Archana**

Behind Old D.C. Office, Bannanje, Udupi



**Pretty Archana**

V.P. Nagar - Anantha Nagar, Manipal-Udupi Main Road.

## PROMOTERS



Builders | Promoters | Engineers | Architects

1st Floor, Anantha Tower, Court Road, Udupi-576101  
Karnataka, India.



### Dr. Aravind Nayak Ammunje

MBBS, DMRD, (LLB), PGJMC, PGDHMM, PGDGM  
Managing Partner

### Amit Aravind

B.E., M.Tech Construction Management  
Partner

### Advisory Team :

Ajay Aravind, B.E., M.B.A., Adithya Aravind, B.E., M.B.A.

**Structural Consultant :** A.G. Associates, Udupi

**FOR BOOKINGS :** Call (+91) 98869 22265 / 96322 55777

Email: sales@archanaprojects.com Website : www.archanaprojects.com

Note: Specifications and amenities may change if necessary. The sole discretion remains with the developers.